

*The*  
**BAY WAVE**  
Hotel & Resort Ltd



# OUR COMPANY



Bay Wave is a company registered under the Companies Act of 1994 of the Government of Bangladesh. We are building a five-star standard chain of hotels and resorts across the country's most iconic tourist destinations—including Dhaka, Cox's Bazar, Kuakata, Sylhet and other parts of Bangladesh.



With a vision to redefine hospitality in Bangladesh, Bay Wave is committed to providing premium accommodations and unforgettable experiences at a price that's accessible to the average traveler. By combining international standards with local warmth, we aim to take the tourism industry of Bangladesh to new heights.

Our mission is simple yet profound; to create world-class hospitality experiences where comfort meets luxury. We strive to offer our guests not only a place to stay, but a memorable journey enriched with scenic beauty, premium services, and the spirit of ethical hospitality.



## MD EKRAM

---

Founder & CEO  
The Bay Wave Hotel & Resort Ltd

# FOUNDER MESSAGE

---

Since our founding in 2024, The Bay Wave Hotel & Resort Ltd. has been dedicated to developing world-class, Shariah-compliant luxury hotels in Bangladesh's most iconic tourist destinations. Our mission is to combine secure halal investment opportunities with premium hospitality services that deliver memorable guest experiences and sustainable returns for investors.

Focused on prime coastal locations such as Kuakata and Cox's Bazar, we blend natural beauty with modern elegance while maintaining international 5-star standards. This vision is led by our Co-Founder, Adv. Maksudur Rahman Rizvee, whose strategic leadership and commitment to ethical excellence guide our growth.

Our vertically integrated business model covers luxury accommodation, multi-cuisine dining, wellness facilities, and entertainment, ensuring consistent quality, operational efficiency, and long-term profitability.

# TABLE OF CONTENT

01

## FLAGSHIP PROJECT – COX'S BAZAR

Shariah-compliant luxury hotel project at the heart of Cox's Bazar.

02

## UPCOMING PROJECT – KUAKATA

Spanning over 500+ decimals of premium land in the pristine coastal destination.



**BAY  
WAVE**

# 01

## FLAGSHIP PROJECT- **COX'S BAZAR**

---

Our flagship property is under development at Kolatoli Beach, Cox's Bazar just steps away from the world's longest natural sea beach. Located only a 2-minute walk from Dolphin Mor to Marine Drive Road, this landmark project is designed to deliver the full essence of five-star living with breathtaking views, modern facilities, and unmatched convenience.

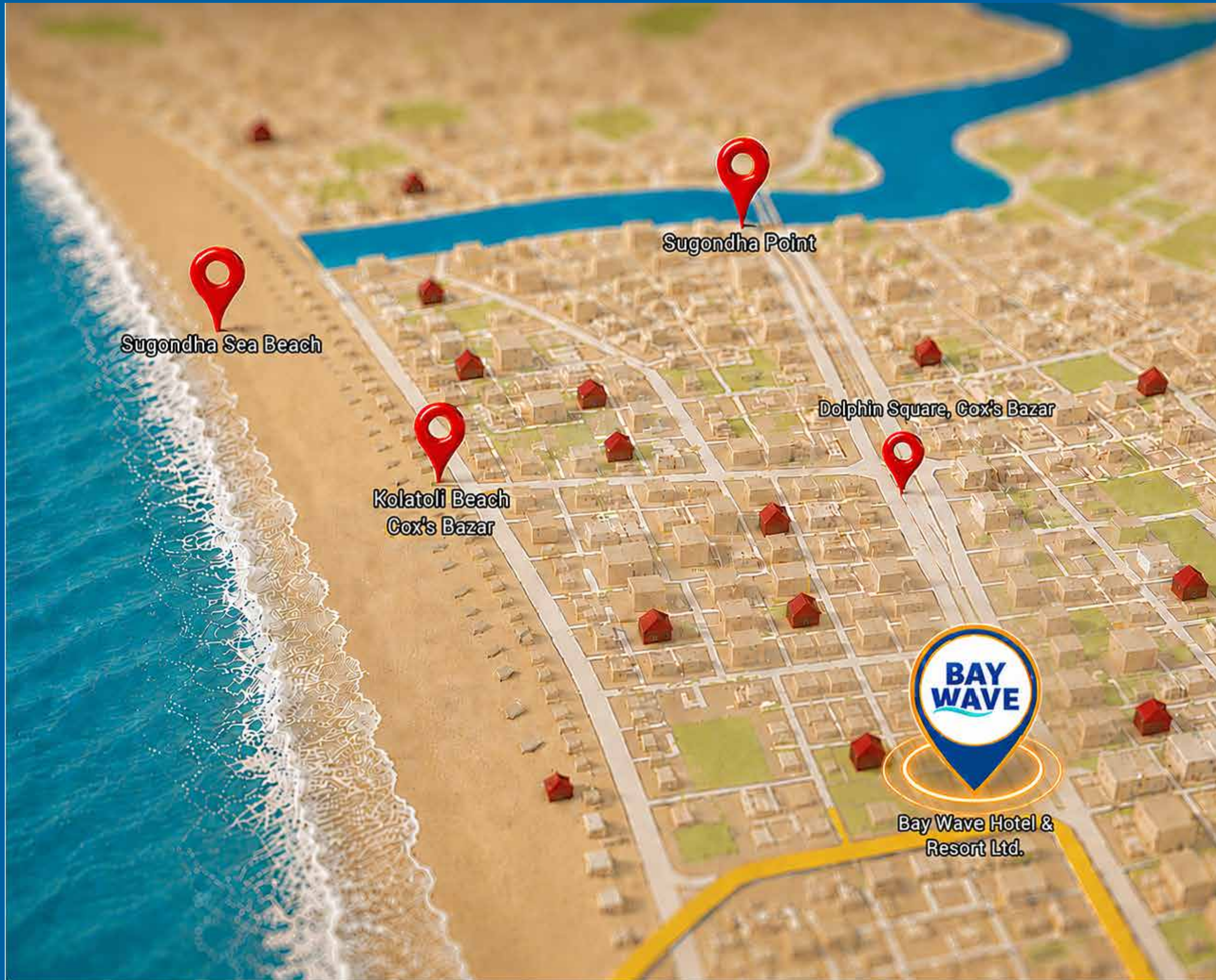
Located in a prime beachfront area in Kolatoli, Bay Wave will feature multi-cuisine restaurants, a rooftop infinity pool, spa and wellness center, luxury suites, conference halls, cineplex, and exclusive leisure spaces. The project is being developed to meet international hospitality standards while maintaining a 100% alcohol-free, Shariah-compliant environment.

For investors, Bay Wave offers the opportunity to own a share in one of Bangladesh's most promising tourism ventures. With growing local and international tourist demand, property value appreciation and steady halal profit are guaranteed.



THE BAY WAVE

# LOCATION MAP



# HOTEL FEATURES

---



180 Rooms



Presidential Suite



Cottage Suite



Penthouse



Deluxe Room



Super Deluxe



Candle Light Corner



Restaurant



Ballroom



Kids zone



Medical Room



Prayer Room



Infinity Swimming Pool



Breast Feeding Room

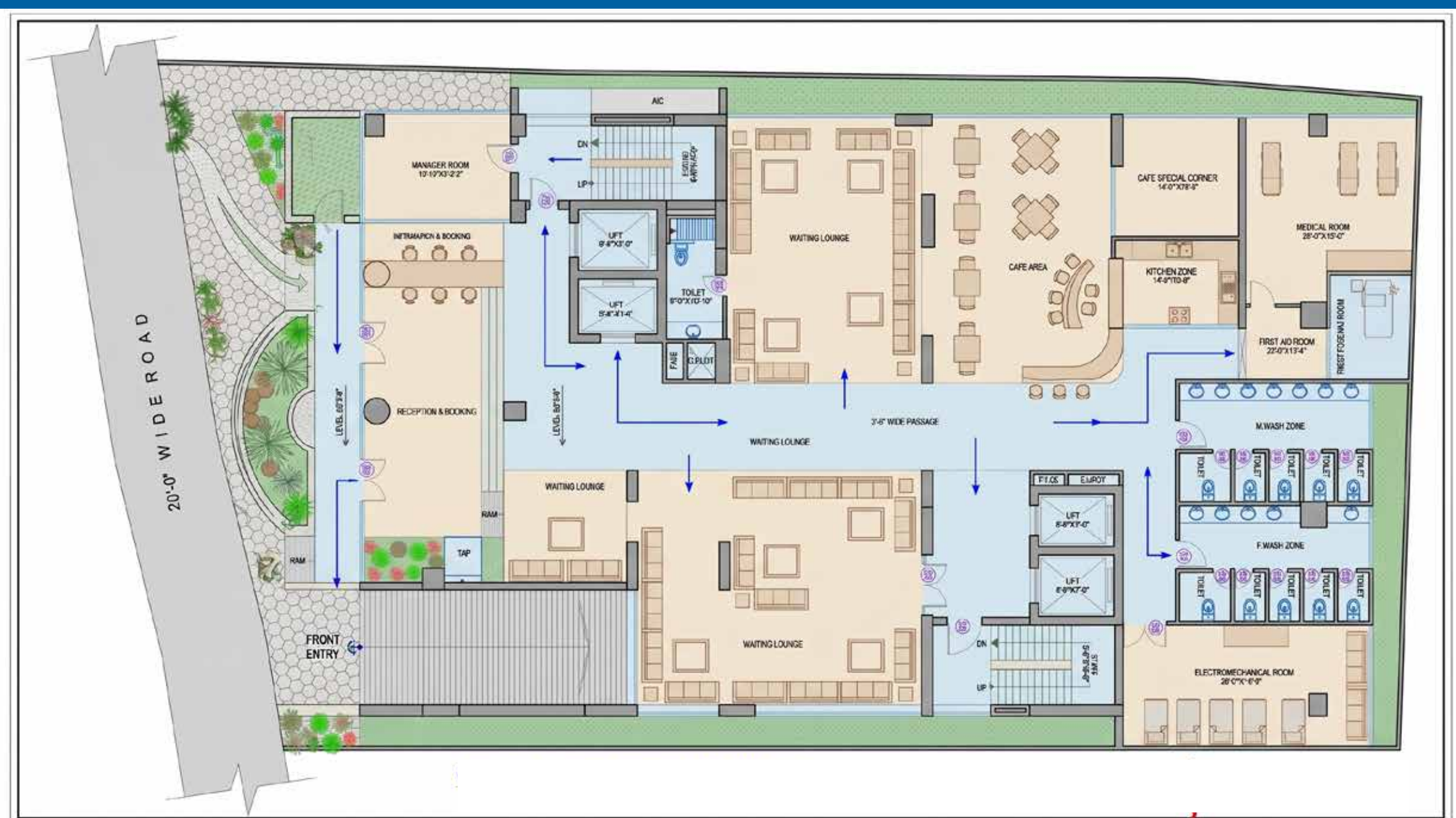


Gym

# BASEMENT FLOOR BLUEPRINT

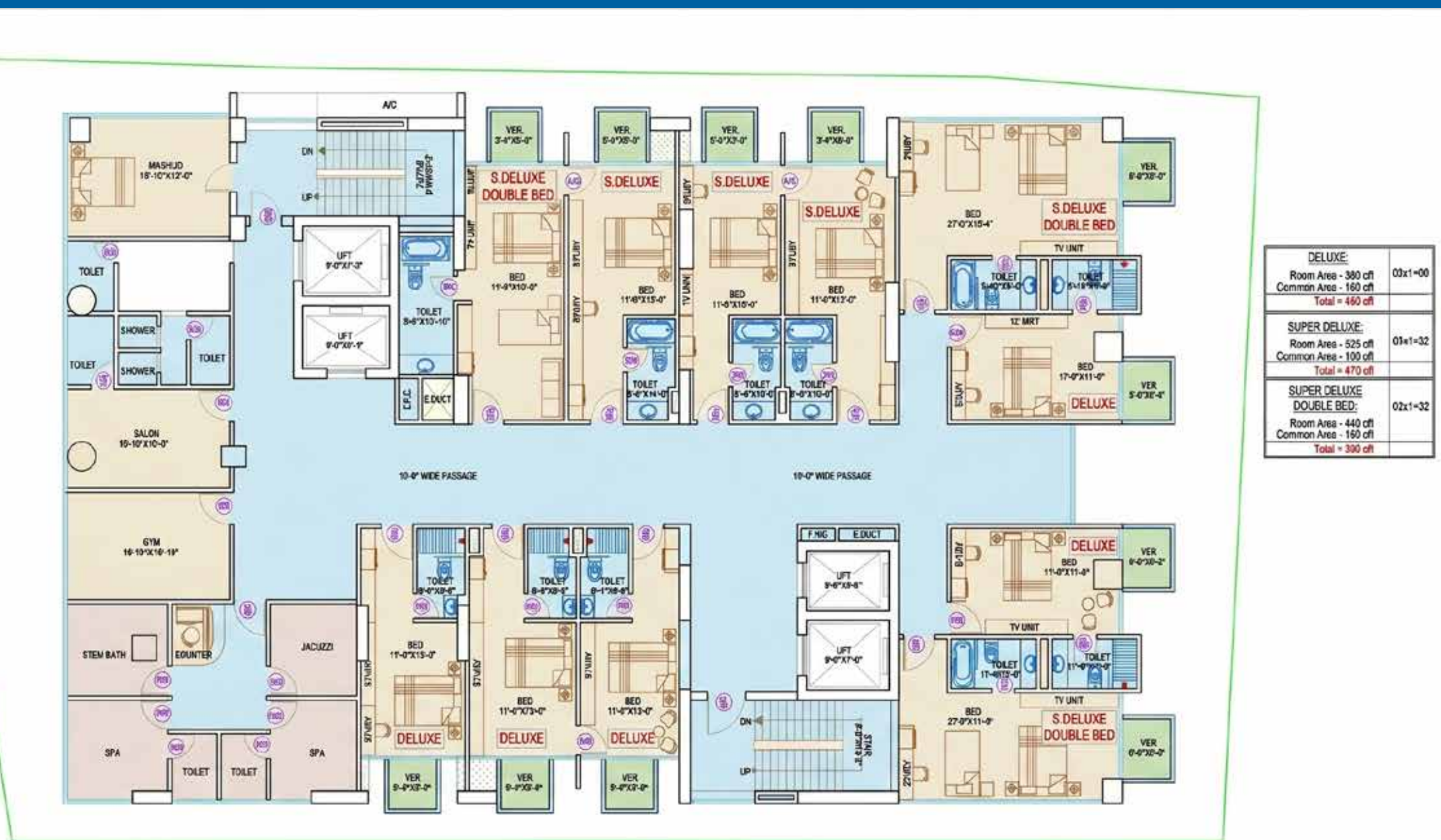


# GROUND FLOOR BLUEPRINT





# 2<sup>ND</sup> FLOOR BLUEPRINT



<b>DELUXE:</b> Room Area - 360 cft Common Area - 160 cft <b>Total = 460 cft</b>	03x1=00
<b>SUPER DELUXE:</b> Room Area - 525 cft Common Area - 190 cft <b>Total = 470 cft</b>	01x1=32
<b>SUPER DELUXE DOUBLE BED:</b> Room Area - 440 cft Common Area - 160 cft <b>Total = 390 cft</b>	02x1=32

# 3<sup>RD</sup> TO 7<sup>TH</sup> FLOOR BLUEPRINT



# 10<sup>TH</sup> TO 11<sup>TH</sup> FLOOR BLUEPRINT



# 13<sup>TH</sup> FLOOR BLUEPRINT



<b>DELUXE:</b> Room Area - 380 sft Common Area - 140 sft <b>Total = 430 sft</b>	08x1=08
<b>DELUXE DELUXE BED:</b> Room Area - 480 sft Common Area - 150 sft <b>Total = 640 sft</b>	02x1=01
<b>SUPER DELUXE:</b> Room Area - 325 sft Common Area - 166 sft <b>Total = 425 sft</b>	03x1=02
<b>SUPER DELUXE DOUBLE BED:</b> Room Area - 440 sft Common Area - 150 sft <b>Total = 590 sft</b>	08x1=02
<b>COTTAGE SUITE</b> Room Area -1380-1160 sft Common Area - 23080 sft <b>Total = 2820 sft</b>	01x1=01

<b>Deluxe:</b>	
Room Area	300 sft
Common Area	150 sft
Total	450 sft
<b>Deluxe Double Bed:</b>	
Room Area	490 sft
Common Area	150 sft
Total	640 sft
<b>Super Deluxe:</b>	
Room Area	325 sft
Common Area	150 sft
Total	475 sft
<b>Super Deluxe Double Bed:</b>	
Room Area	440 sft
Common Area	150 sft
Total	590 sft
<b>Mini Presidential Suite:</b>	
Room Area	780 sft
Common Area	150 sft
Total	930 sft
<b>Presidential Suite:</b>	
Room Area	930 sft
Common Area	150 sft
Total	1080 sft
<b>Cottage Suite:</b>	
Room Area	1360+1160 sft
Common Area	300 sft
Total	2820 sft

# ROOFTOP BLUEPRINT





  
Investor Funds

Asset Based Development

Asset Based Development

Revenue Sharing

Investor

# 02

## UPCOMING PROJECT- KUAKATA

---

Bay Wave is expanding its footprint to Kuakata, one of Bangladesh's most pristine coastal destinations. Spanning over 500+ decimals of premium land, this upcoming five-star resort will offer one and only stunning sunrise and sunset views over the sea in Bangladesh. Alongside world-class comfort and eco-friendly elegance, guests can explore Kuakata's top attractions — including the serene beach, Rakhine cultural villages, Mangrove forests, nearby Eco-parks and local seafood markets — all just moments away.



# WHY INVEST IN **BAY WAVE?**

## Investment Security:

Land-backed projects with promising long-term growth potential offer a secure and reliable investment opportunity.

## Attractive ROI:

Flexible schemes offering 15%–25% profit margins.

## Transparency & Trust:

Clear, responsible, and Shariah-compliant business model.

## Eco-Friendly Commitment:

Sustainable, eco-conscious tourism initiatives.



## Proven Growth Vision:

Expansion plans across Bangladesh's key tourist hubs.

## Customer Satisfaction:

Our foremost commitment is to ensure the highest level of safety & security for both national and international guests & investors.

## Innovation:

Constantly evolving with modern technologies and global hospitality trends.

# BAY WAVE MEMBERSHIP TIERS

---



## THE MEMBERSHIP CARDS

## SILVER

---

- ▶ 1 to 2 Shares.
- ▶ 20% discount at all Bay Wave projects.

## GOLD

---

- ▶ 3 to 4 Shares.
- ▶ VIP service facilities.
- ▶ 25% discount.

## DIAMOND

---

- ▶ 5 to 9 Shares.
- ▶ Sea view rooms and VVIP service facilities.
- ▶ 30% discount

## PLATINUM

---

- ▶ 10 to Unlimited Shares
- ▶ Sea view room/Penthouse and VVIP services.
- ▶ 40% discount.

## ROYAL

---

- ▶ Full Suite/Room Ownership.
- ▶ VVIP service and Penthouse.
- ▶ 50% discount.
- ▶ VIP hotel lounge access.

# BENEFITS OF OWNERSHIP



## Premium Investment:

Share ownership in a five-star hotel in Cox's Bazar.

## Legal Security:

Opportunity to become a shareholder via "**Sub-Kabala**" registration.

## Flexibility:

Ownership is transferable or sellable at any time.

## Complimentary Stay:

3 days and 2 nights of free vacation annually.

## Year-round Discounts:

20% to 50% price reduction at any time of the year.

## Shariah-Compliant:

Lifetime Halal profit benefits.



### Value Appreciation:

Potential for future increase in share value.

### Legacy:

Transfer of ownership through generations via inheritance.

### Profitable & Secure:

Highly profitable and secure investment.

### Returns:

15%–25% Halal profit.

# MODE OF **RETURN**

---

Investors in Bay Wave enjoy consistent and attractive returns through a profit-sharing model. By aligning investor success with company growth, we ensure a win-win partnership that strengthens long-term stability and profitability.

A beachfront property is more than real estate; it's a lifetime of returns from a view that never gets old.





facebook.com/  
**hotelBaywave**



linkedin.com/company/  
**hotelbaywave**



youtube.com/  
**@baywavehotel**

P: +880 1711-992-504

P: +880 1711-992-534

P: +44 7342-223-334

W: [hotelbaywave.com](http://hotelbaywave.com)

E: [infobaywave@gmail.com](mailto:infobaywave@gmail.com)

#### **Project Office:**

Marine Drive Road,  
Dolphin Mor,  
Kolatoli, Cox's Bazar

#### **Dhaka Office:**

9th Floor, Bengal  
Centre, 28, Topkhana  
Road, Dhaka-1000

#### **Cumilla Office:**

26/27, Madhuri Noni  
Jashim Tower,  
Kandirpar, Laksham

#### **UK Office:**

47 Rock Street,  
Sheffield, South  
Yorkshire, S3 9JA, UK.